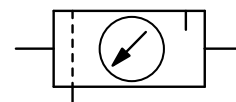


Description	Solid, low-cost FRL service unit made of aluminium equipped with pressure gauge.
Media	compressed air or non-corrosive gases
Supply pressure	max. 16 bar for metal bowl with sight glass, max. 30 bar for metal bowl without sight glass
Adjustment	by plastic knob with snap-lock up to G $\frac{1}{2}$ by hexagon head screw from G $\frac{3}{8}$ up to G1 $\frac{1}{2}$ on (CD.-1A.) by T-handle from G1 $\frac{1}{2}$ (CD.-12.) up to G2 on
Relieving function	relieving, optionally non-relieving
Gauge port	G $\frac{1}{4}$ or G $\frac{1}{2}$ at CD.-01/-02, on both sides of the body, one screw plug supplied
Filter element	semiautomatic drain as standard, optionally automatic (max. 16 bar) or manual drain for max. 30 bar
Drainage	20 μ m or 50 μ m, optionally 5 μ m or 50 μ m, made of propylene Bowl metal version with or without sight glass
Temperature range	-10 °C to 50 °C / -14 °F to 122 °F metal bowl with sight glass, for G $\frac{1}{2}$ to G $\frac{3}{8}$ -20 °C to 60 °C / -4 °F to 140 °F metal bowl with sight glass, for G $\frac{3}{8}$ to G2 -30 °C to 80 °C / -22 °F to 176 °F metal bowl without sight glass, for all sizes
Material	Body: aluminium Elastomer: NBR/Buna-N Bowl: aluminium



G $\frac{1}{8}$ up to G2

Dimensions			Combination	Bowl	Filter	Flow	Connection	Order	
A	B	C	consisting	design	element	rate	thread	number	
mm	mm	mm	of	made of / with		m ³ /h*1	l/min*1	G	

A*

FRL unit, 2-part

P₁: max. 16 bar, P₂: 0.8...8 bar, 20 / 50 μ m, semiautomatic drain, relieving, with gauge

CD2

80	201	128	BD+LD	metal/sight glass	50	27	450	G $\frac{1}{8}$ G $\frac{1}{4}$	CD2-01 CD2-02
128	248	148		metal/sight glass	50	108	1800	G $\frac{3}{8}$ G $\frac{1}{2}$	CD2-03 CD2-04
275	314	179		metal/sight glass	50	300	5000	G $\frac{3}{4}$ G1	CD2-06 CD2-08
386	314	179		metal/sight glass	50	300	5000	G1 $\frac{1}{4}$ G1 $\frac{1}{2}$	CD2-10 CD2-1A
355	483	223		metal/sight glass	50	960	16000	G1 $\frac{1}{2}$ G2	CD2-12 CD2-16



CD2-01/-02



CD2-03/-04



CD2-10/-1A

Special options, add the appropriate letter

5 μ m filter element

CD2-..G

0.3...3 bar regulation range

CD2-..B

1...15 bar

CD2-..E

operating press. 30 bar

only for metal bowl (without sight glass) with manual drain

CD2-..NH

manual drain

max. 16 bar

CD2-..H

automatic drain

drainage by float valve, max. 16 bar for G $\frac{3}{8}$ up to G2

CD2-..R

flange connection

according to EN-1092-1 or ASME B16.5 on request

CD2-..F.

Accessories, enclosed

B*

mounting bracket

made of steel

for G $\frac{1}{8}$ and G $\frac{1}{4}$

BW30-02

mounting nut

made of plastic

for G $\frac{1}{8}$ and G $\frac{1}{4}$

M30x1,5K

mounting bracket

made of steel

for G $\frac{3}{8}$ and G $\frac{1}{2}$

BW50-03

mounting nut

made of plastic

for G $\frac{3}{8}$ and G $\frac{1}{2}$

M50x1,5K

mounting bracket

made of stainless steel

for G $\frac{3}{4}$ up to G1 $\frac{1}{2}$ (1A)

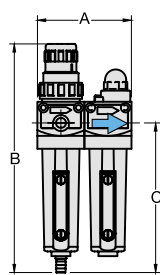
BW00-59S

set of brackets

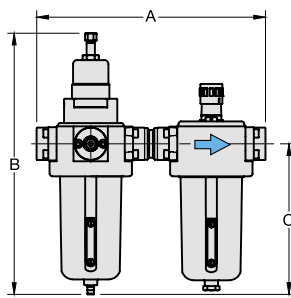
made of steel

for G1 $\frac{1}{2}$ (12) and G2

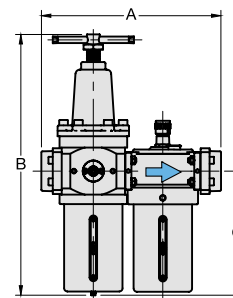
BW00-61



CD2-01/-04



CD2-06/-08/-10/-1A



CD2-12/-16

*1 at 8 bar supply pressure, 6 bar outlet pressure and 1 bar pressure drop

* Product group

Further details: see chapter for single devices

PDF CAD
www.aircom.net



Order example:
CD2-01